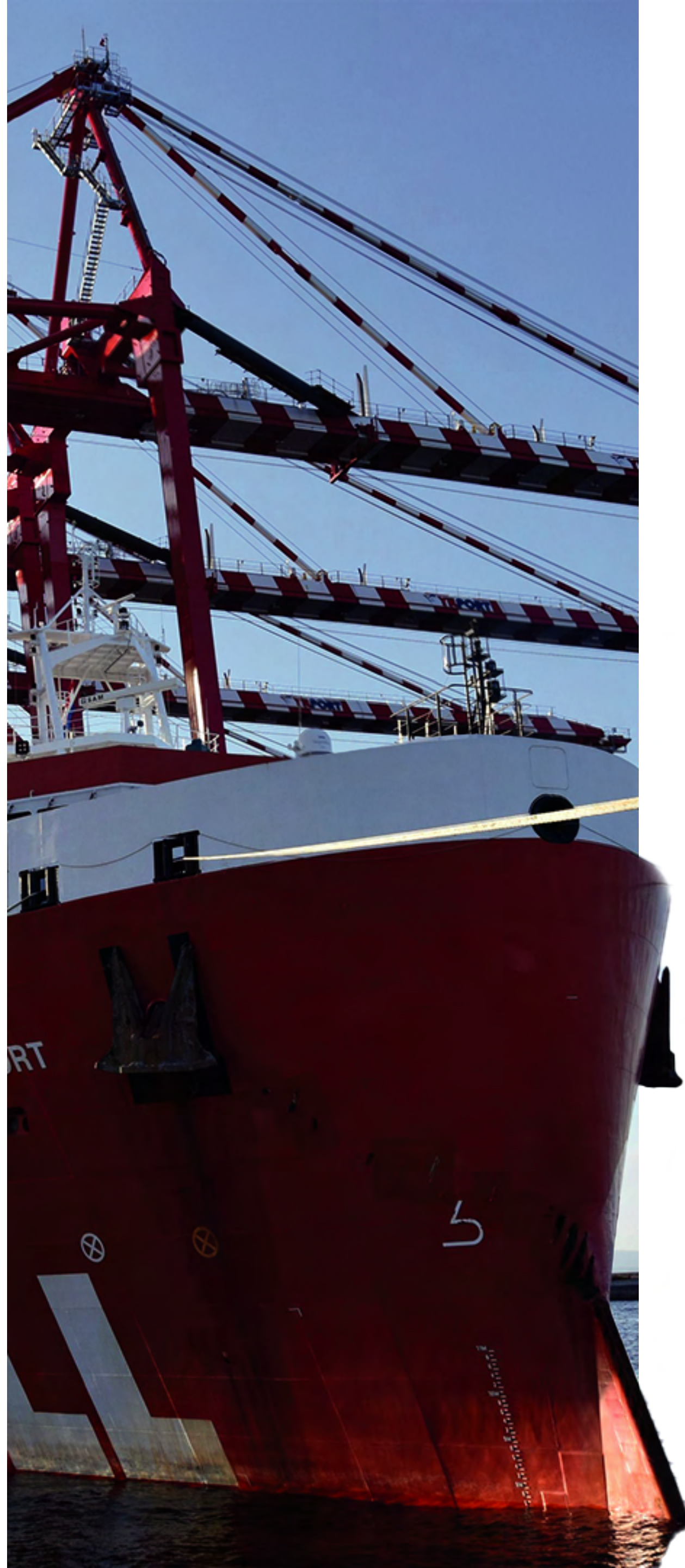




BATI GROUP OF SHIPPING COMPANIES

2023



We have logistics services
in all borders and ports

We are a logistics company
based on shipping,
founded in 1992



Our Headquarters are located
in Istanbul, Türkiye

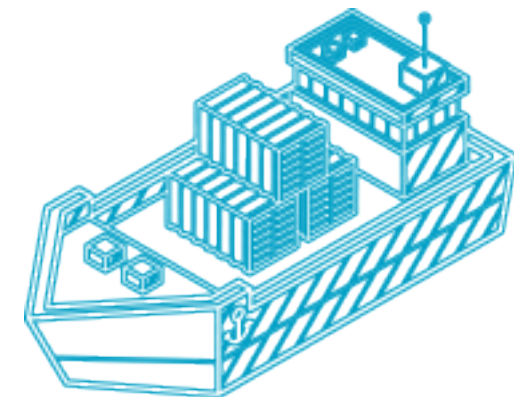
We provide logistics solutions
to our clients through our own offices
in Türkiye, Germany, USA and Italy with
200+ employees

Hinterland

4 COUNTRIES
15 OFFICES
200+ EMPLOYEES



Services

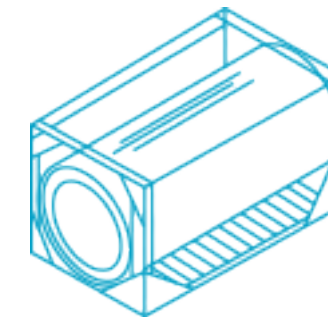


Sea Freight
(FCL/ LCL)

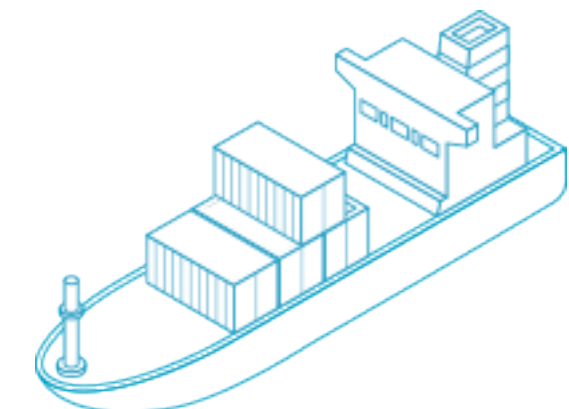


Air Freight and Fast
Delivery Services

BATI **EXPRESS**



Bulk Liquid
Logistics



Project Cargo
Forwarding



- Project Cargo Forwarding
- Oil & Gas and Offshore Logistics
- Port Agency Services
- Yacht and Boat Transportation

Tailor Made Industrial Solutions



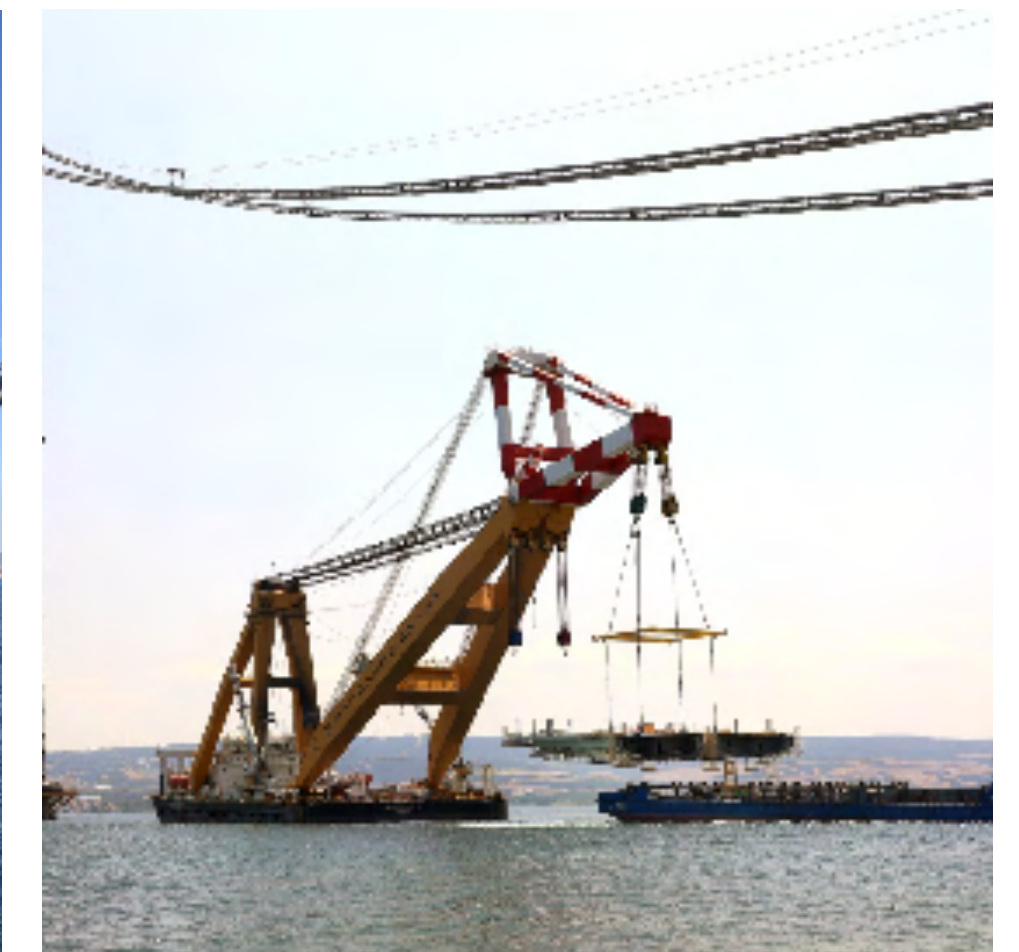
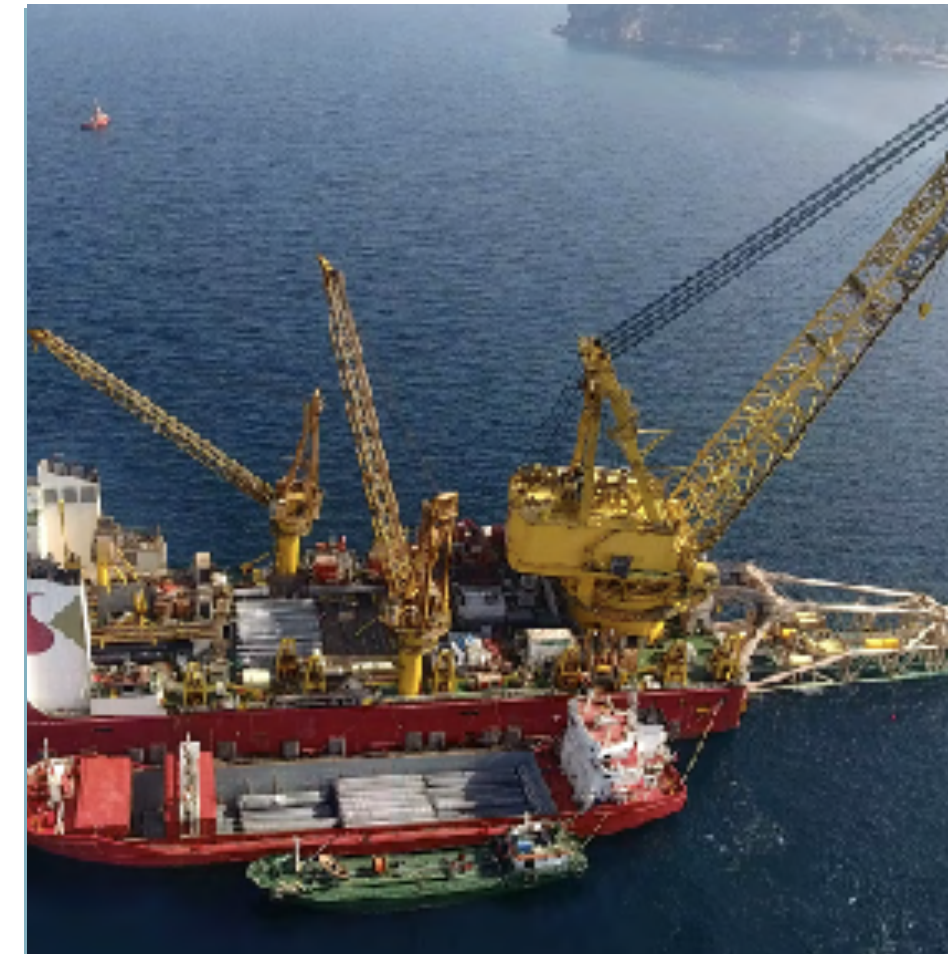
Offshore Services

Oil & Gas and Renewable Energy

BATI has over 30 years of experience and always strives to offer the highest quality services to Off-Shore sector meeting our Principals needs in a professional and unbiased manner as well as in accordance with local and international regulations.

Our Services including:

- Port Agency Services
- Transportation of Various Equipments.
- Material / Provision Supply
- Custom Clearance
- Crew Change
- Waste Management
- Environment Protection / Pollution Prevention



Port Agency Services

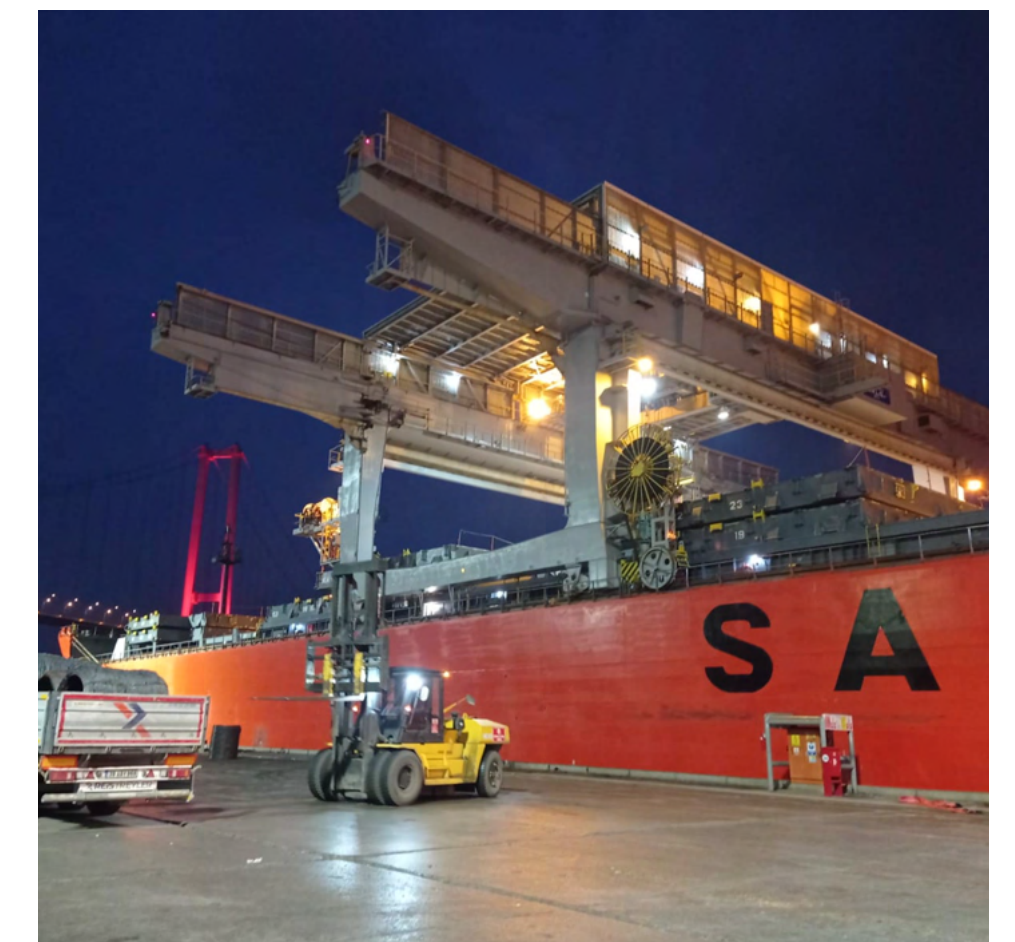
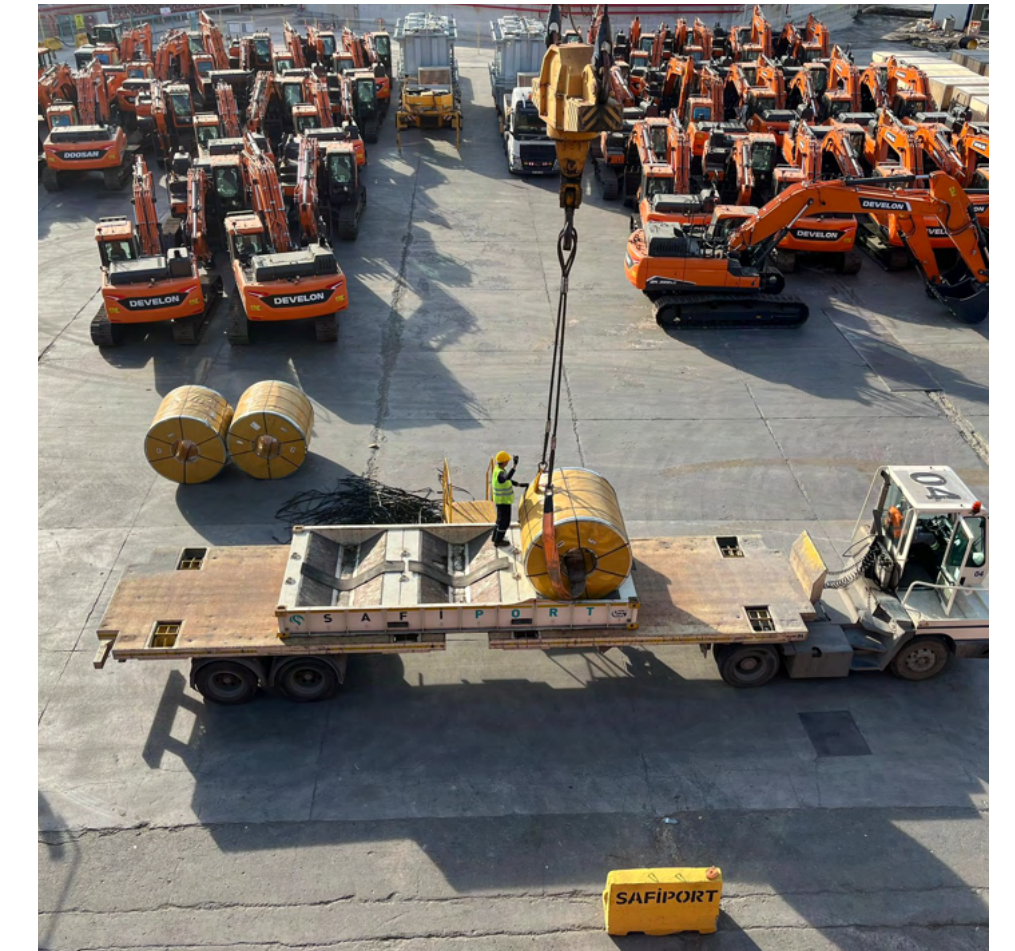
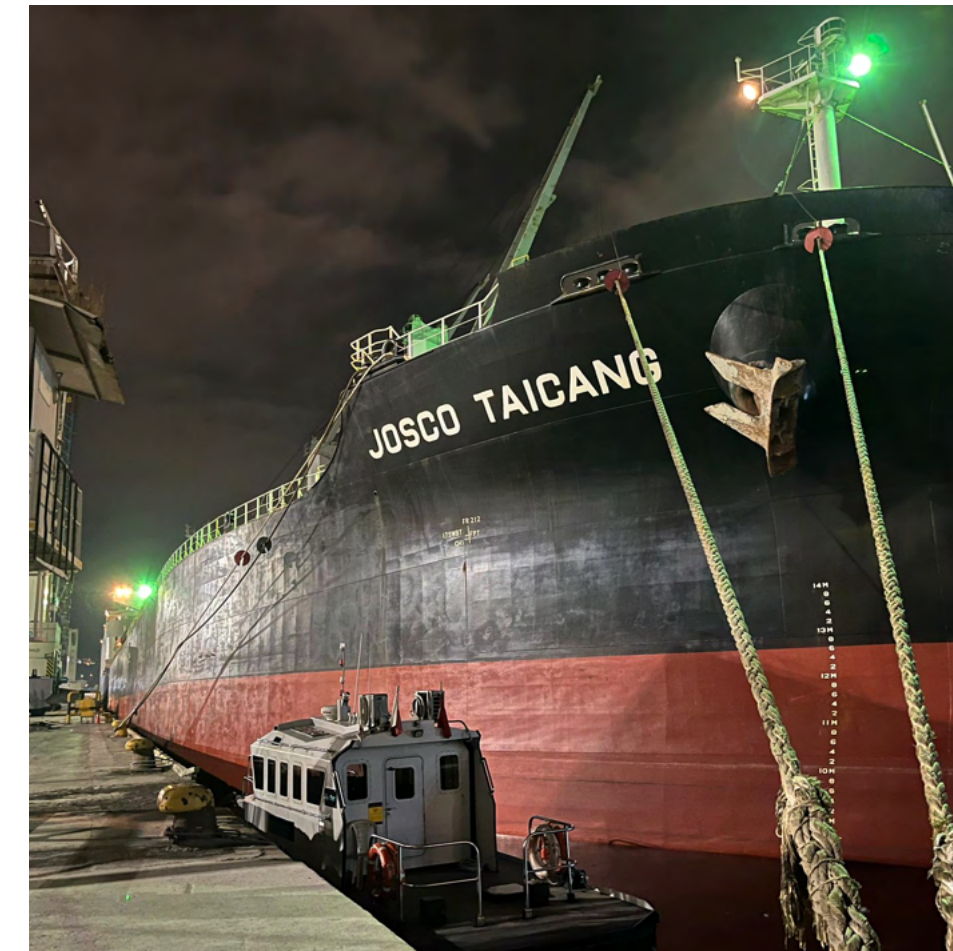
BATI GROUP is a full service agency handling the needs of various maritime interests including ship owners / operators, charterers and cargo interests.

With extensive experience handling various vessel types from dry bulk to tankers, from break bulk to RO-RO, rest assured that our well trained and experienced staff can handle all of your needs.

As a port agency, we provide services to various firms, and some of our esteemed clients include ROLLDOCK, ERNEST PERFECT (EPC) and others...

Our trained and experienced employees are eager to serve your needs attending all vessel types including:

- Tankers – Crude, clean, LPG, chemical, LNG
- Dry bulk – Grain, coal, petcoke, fertilizer
- Break-bulk – Heavy lift, project cargo, RO-RO

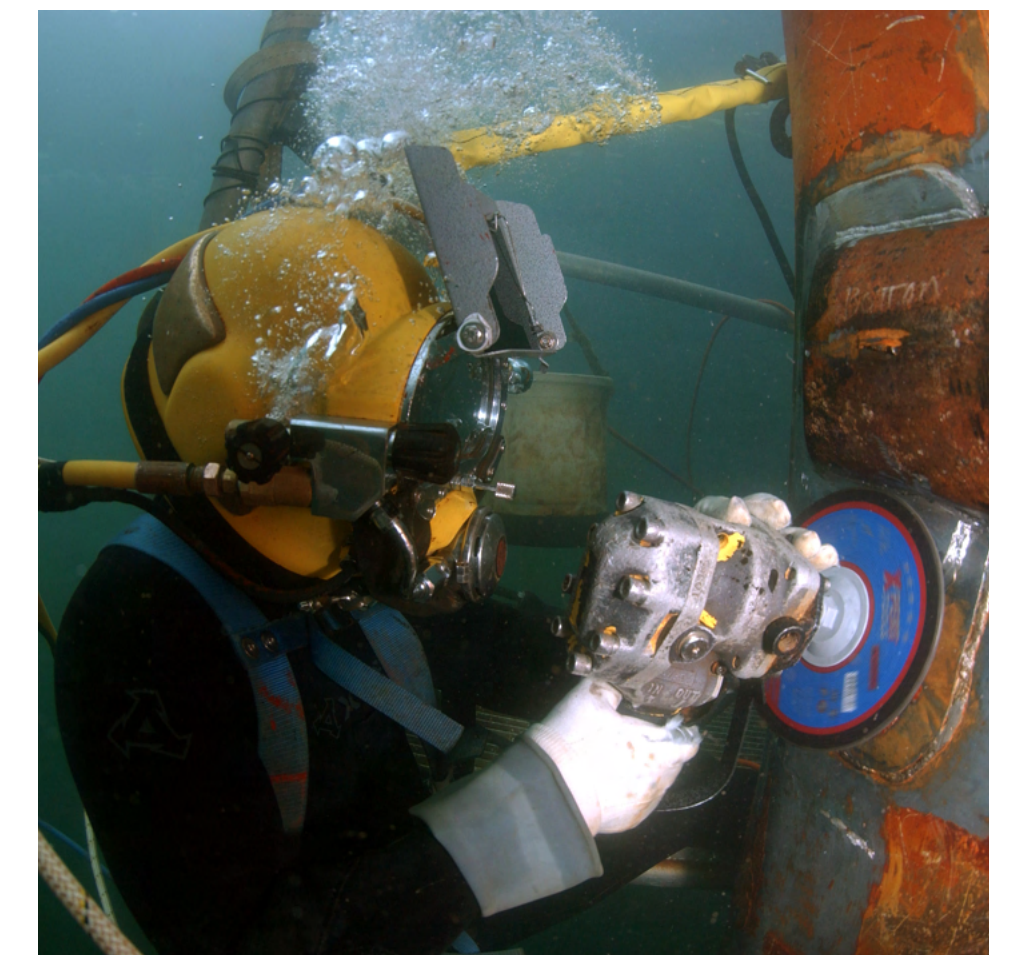
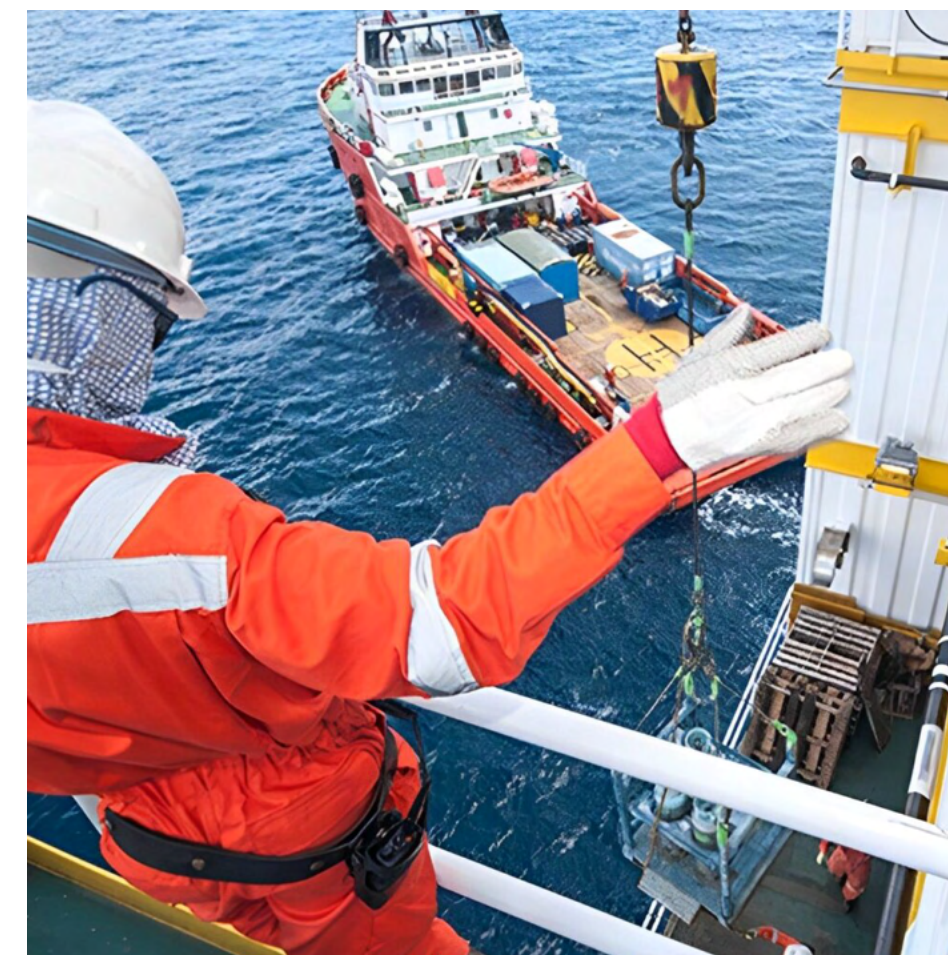
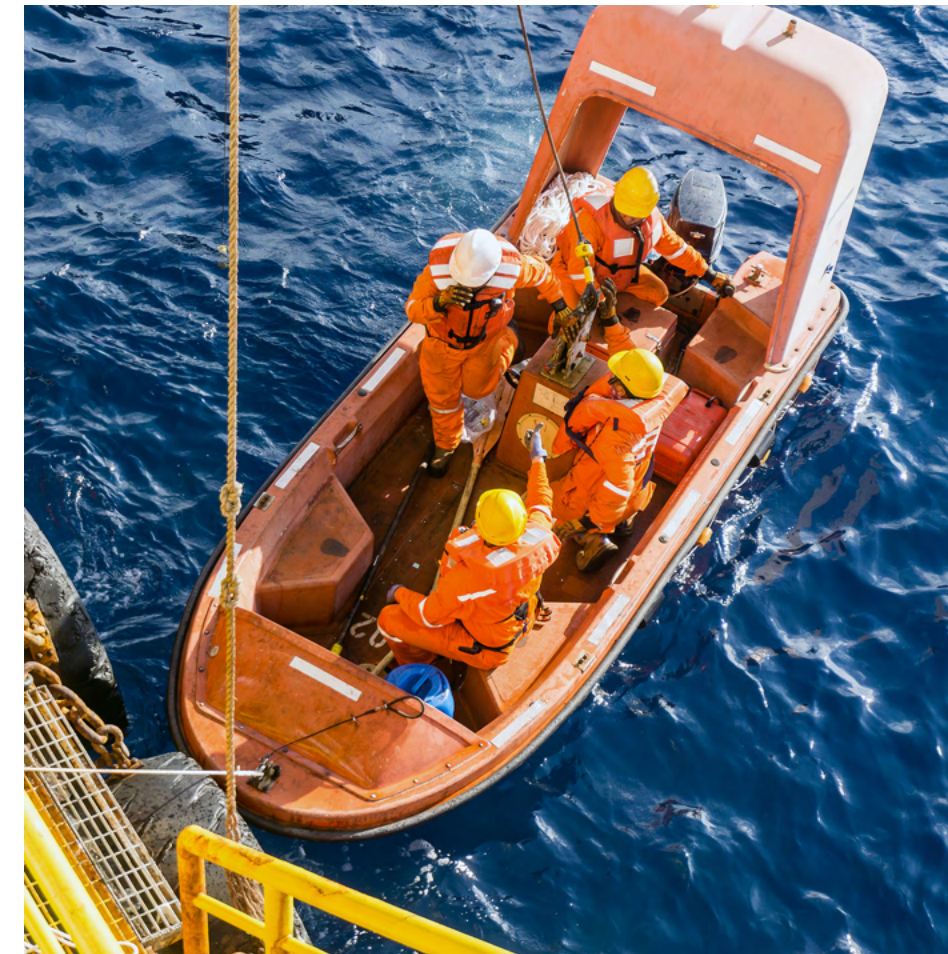


Protective & Husbandry Agency Services

Our first-hand experience in all ports is utilized for the benefit of our shipowners and disponent owner clients.

Our local knowledge of day to day conditions and our keen interest in the promotion of these ports can be used for the advantage of all client operators.

We are able to attend to all husbandry requirements and protect our client's interest at all times.

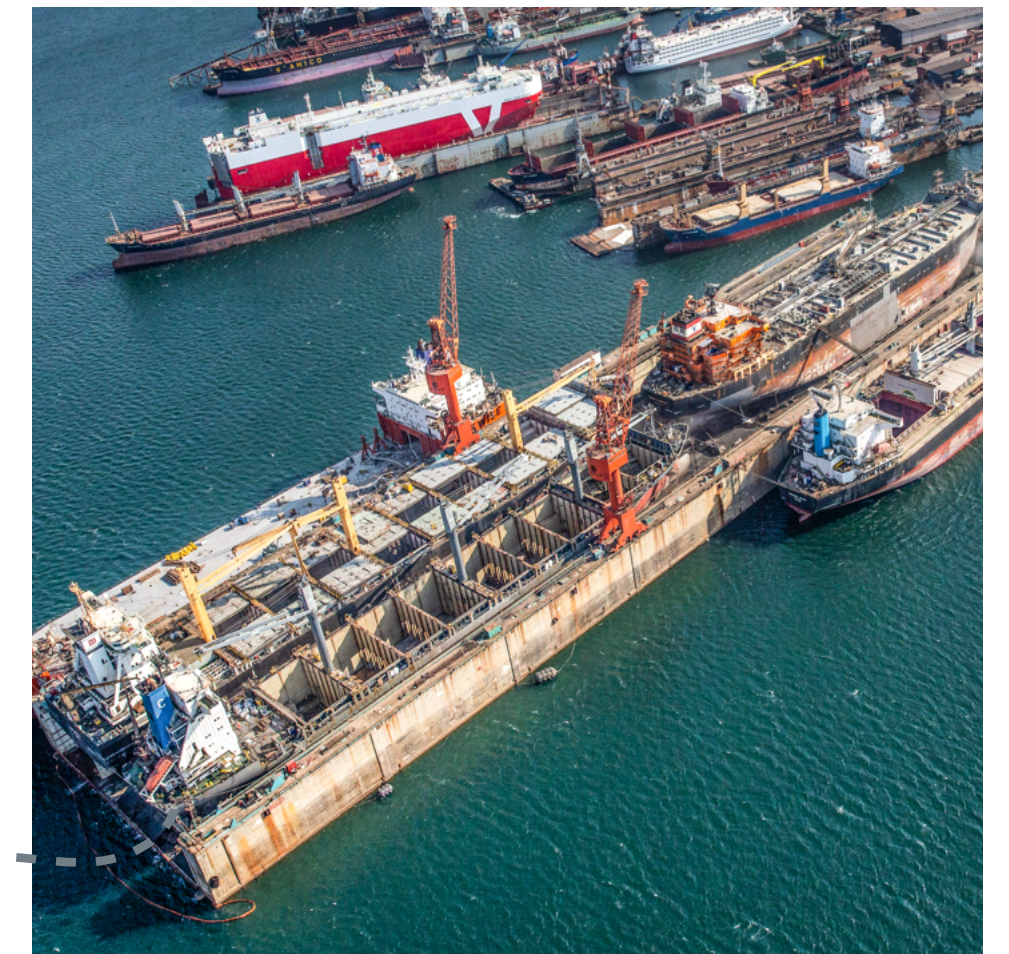


Shipyard Agency Services

Our team is pleased to offer vessel owners calling at Tuzla & Yalova Dry Docks, in the Istanbul region, full Agency and logistical support. We guarantee round-the-clock attendance from the professional and experienced Agency personnel, full daily status reports and effective disbursement account management.

Our close working relationships with all Tuzla and Yalova Dry- Docks, Customs, Immigration and Security bodies combined with our total familiarity of all local formalities, ensures a smooth and swift movement of personnel, crew, spares and equipment to and from our client's vessel.
Tankers – Crude, clean, LPG, chemical, LNG

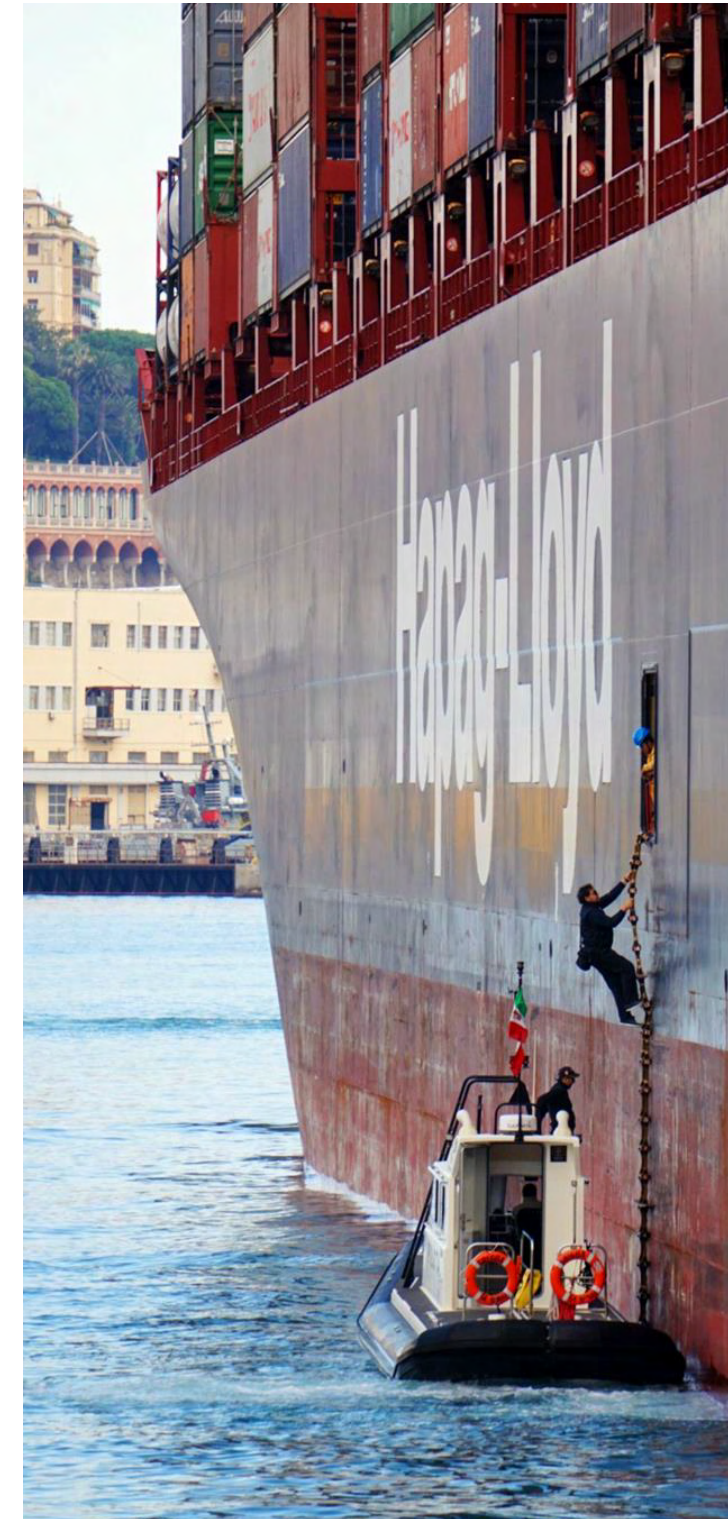
We guarantee on time supply of high quality provisions, deck engine and yard stores, all competitively and locally sourced from professional and reputable companies. Our own airport escort and transfer service will take extra care of your crew and personnel. Local accommodation from hotels to short-term leases and vehicle hire are also available. Our 24- hour airport team is ready to ensure a same day clearance and delivery of spares and equipment.



Transit Agency Services

There are more than 260 straits in the world, but none of them even remotely resembles the Turkish Straits in terms of the geography and navigational challenges.

BATI GROUP provide a comprehensive, integrated and high quality service tailored to the unique characteristics of operation through the Turkish Straits.



We have fully staffed offices at both ends of the Straits, Canakkale and Istanbul ports. With an experienced team we are fully monitoring Turkish Straits and reporting below table of our principles day by day;

VESSEL TYPE	DARDANELLES NORTHBOUND	DARDANELLES SOUTHBOUND	BOSPHORUS NORTHBOUND	BOSPHORUS SOUTHBOUND
LNG CARRIERS- LOA 200 - 350	12-24 HRS	12-24 HRS	-	-
REGULAR TANKERS LOA UNTIL 150 M	8-16 HRS	12-24 HRS	12-24 HRS	12-24 HRS
HANDYSIZE TANKERS LOA 150-200 M	12-24 HRS	12-24 HRS	36-48 HRS	36-48 HRS
PANAMAX & AFRAMAX & SUEZMAX TANKERS LOA 200-299 M	12-24 HRS	24-48 HRS	24-48 HRS	24-48 HRS
LPG CARRIERS - LOA UNTIL 150 M	8-16 HRS	12-24 HRS	36-48 HRS	36-48 HRS
LPG CARRIERS - LOA 150-200 M	12-24 HRS	24-48 HRS	24-48 HRS	24-48 HRS
LPG CARRIERS - LOA 200 M AND ABOVE	12-24 HRS	24-48 HRS	24-48 HRS	24-48 HRS
BULK CARRIER - LOA UNTIL 250 M	8-16 HRS	8-16 HRS	3-4 DAYS	2-3 DAYS
BULK CARRIER - LOA 250 M AND ABOVE	12-24 HRS	12-24 HRS	24-48 HRS	24-48 HRS
GENERAL CARGO - LOA UNTIL 250 M	8-16 HRS	8-16 HRS	3-4 DAYS	2-3 DAYS
GENERAL CARGO - LOA 250 M AND ABOVE	12-24 HRS	12-24 HRS	24-48 HRS	24-48 HRS
CONTAINER VESSELS - LOA UNTIL 250 M	8-16 HRS	8-16 HRS	3-4 DAYS	2-3 DAYS
CONTAINER VESSELS - LOA 250 M - 300 M	8-16 HRS	8-16 HRS	24-48 HRS	24-48 HRS
CONTAINER VESSELS - LOA 300 M AND ABOVE	12-24 HRS	12-24 HRS	24-48 HRS	24-48 HRS
VEHICLE CAR - LOA UNTIL 250 M	8-16 HRS	8-16 HRS	3-4 DAYS	2-3 DAYS
VEHICLE CAR - LOA 250 M AND ABOVE	8-16 HRS	8-16 HRS	24-48 HRS	24-48 HRS



www.batigroup.com.tr



www.batilogistics.it



www.batilogistics.de



www.batiyachtlogistics.com



2023

